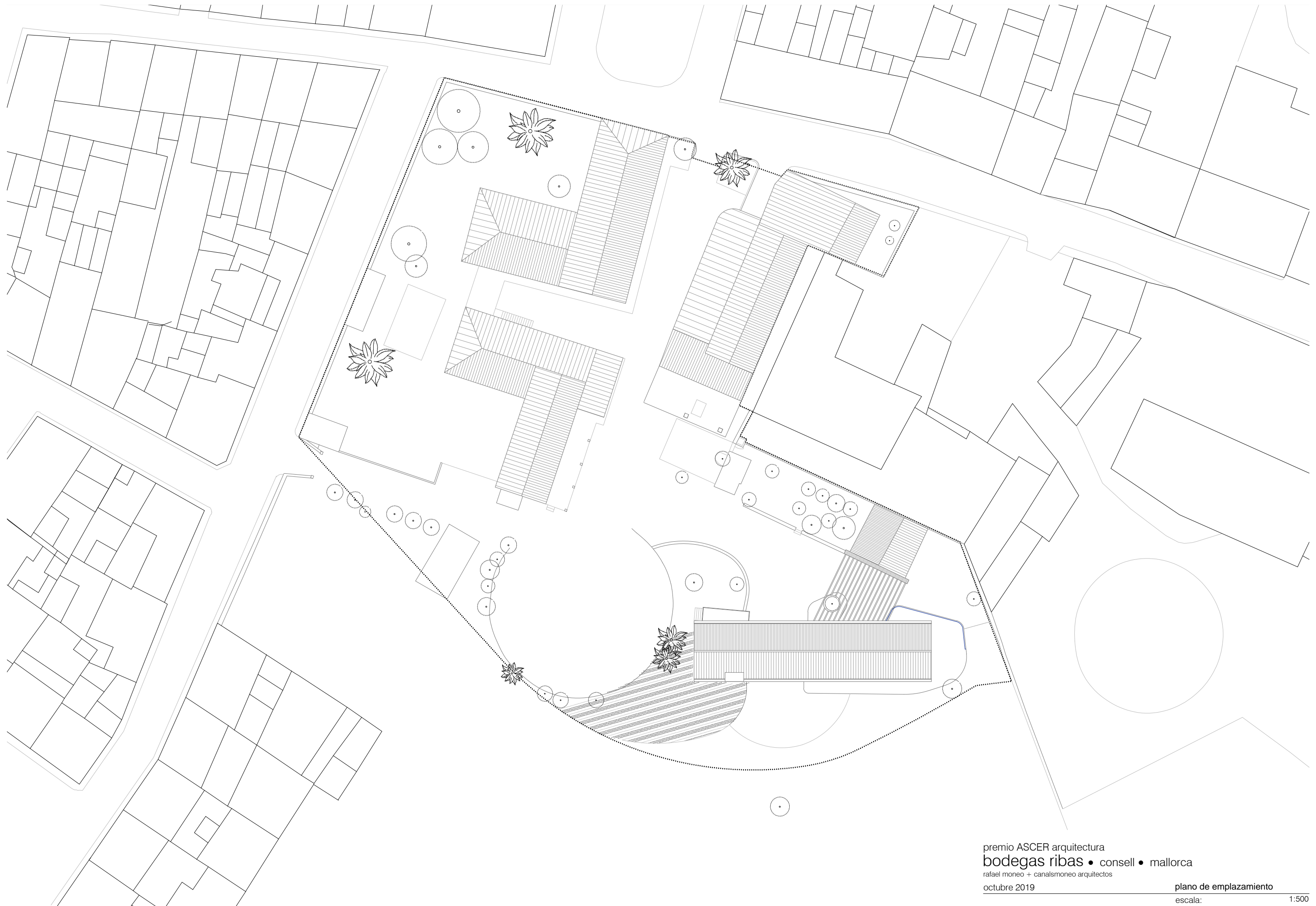


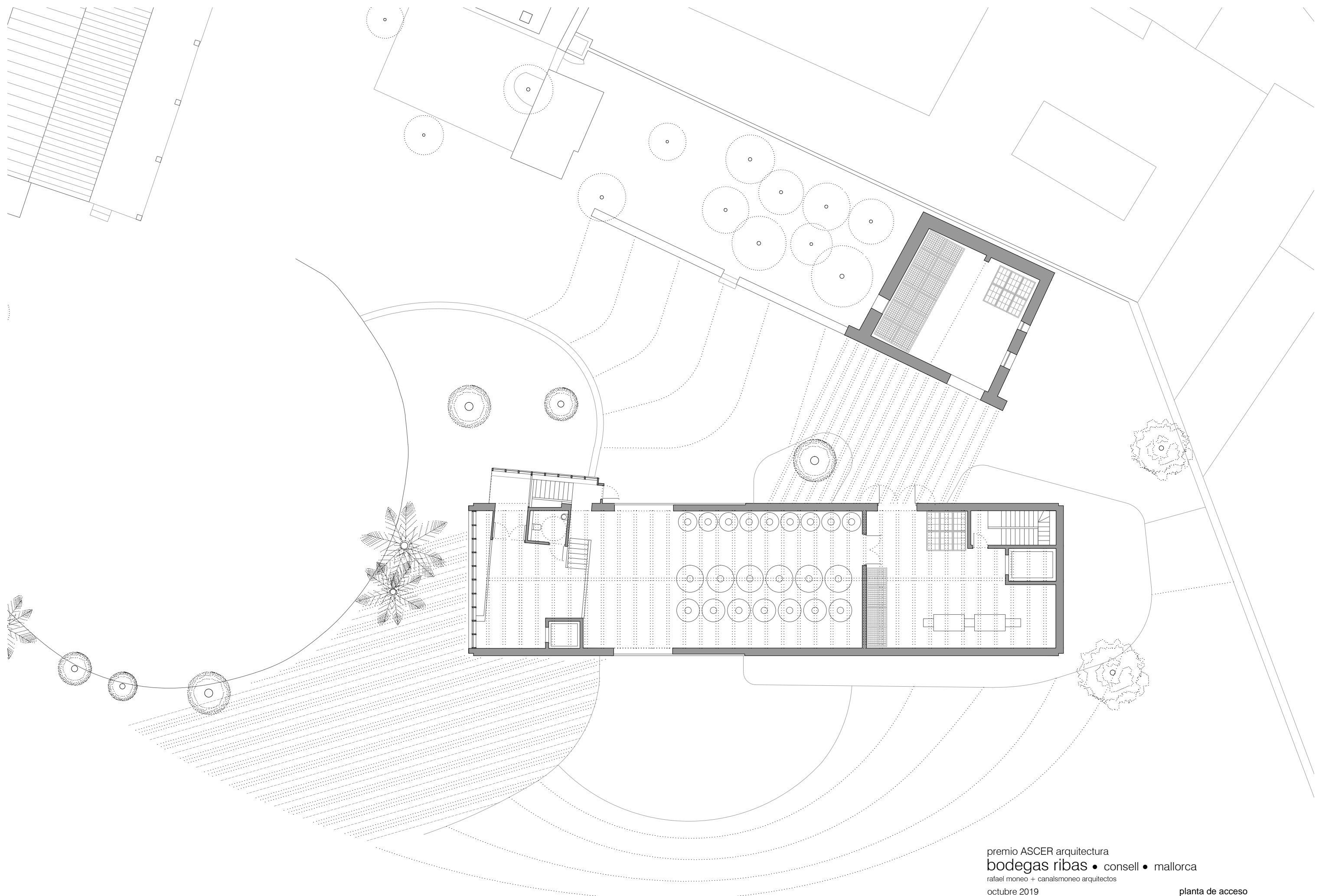


premio ASCER arquitectura  
**bodegas ribas • consell • mallorca**  
rafael moneo + canalsmoneo arquitectos  
octubre 2019

plano de situación  
escala:

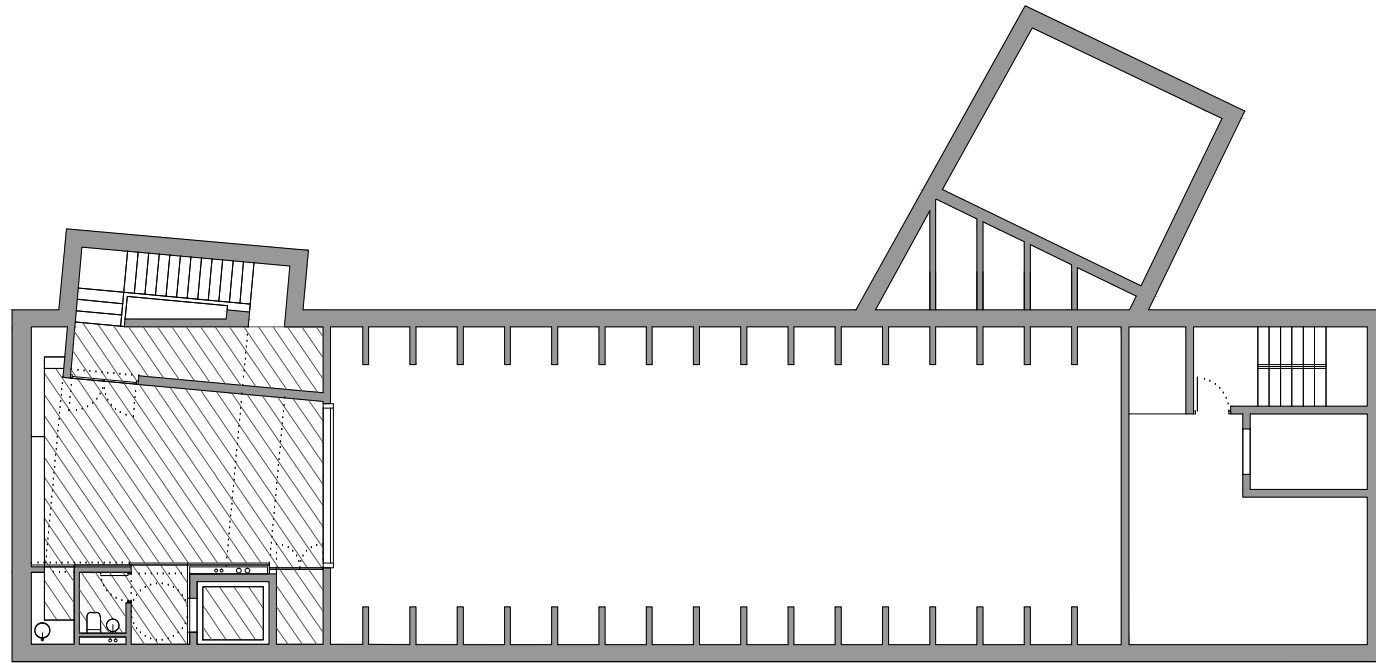
1:2000



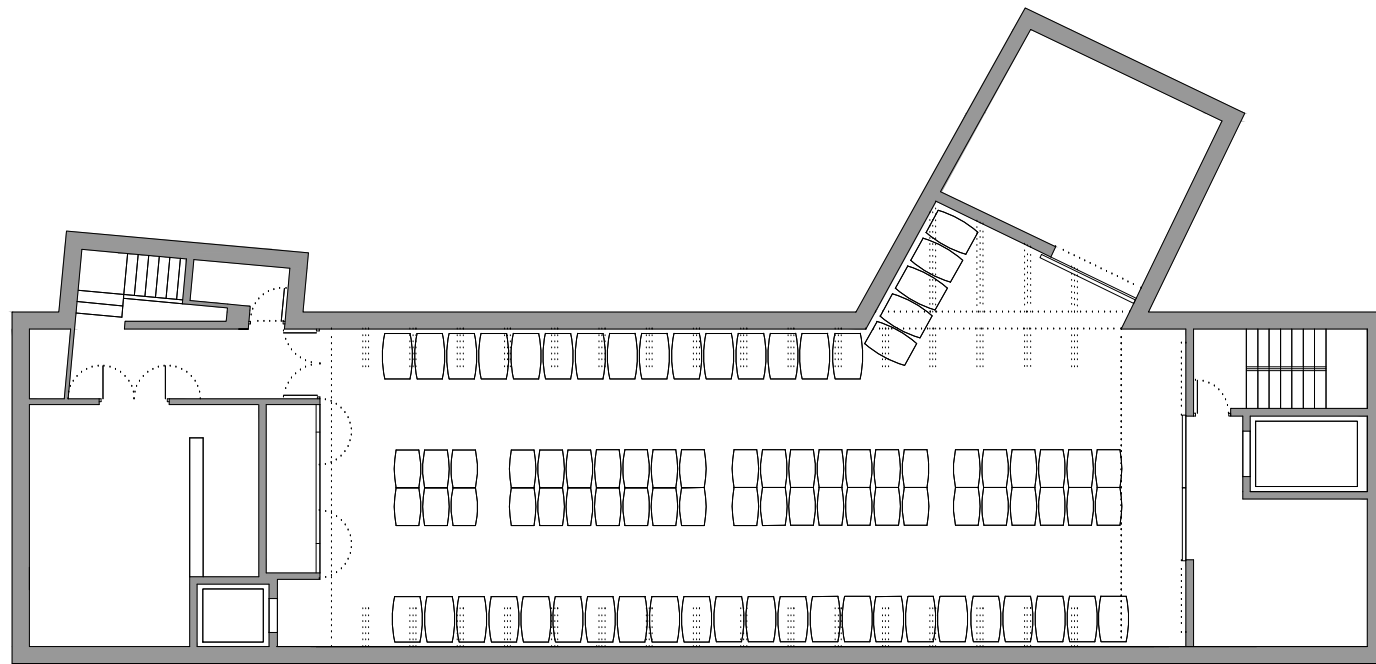


premio ASCER arquitectura  
**bodegas ribas • consell • mallorca**  
rafael moneo + canalsmoneo arquitectos  
octubre 2019

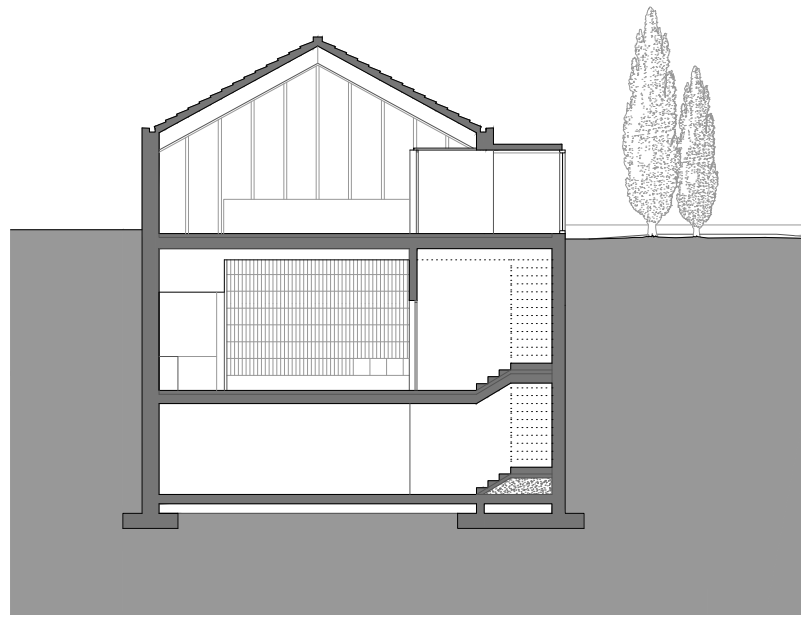
planta de acceso  
escala:



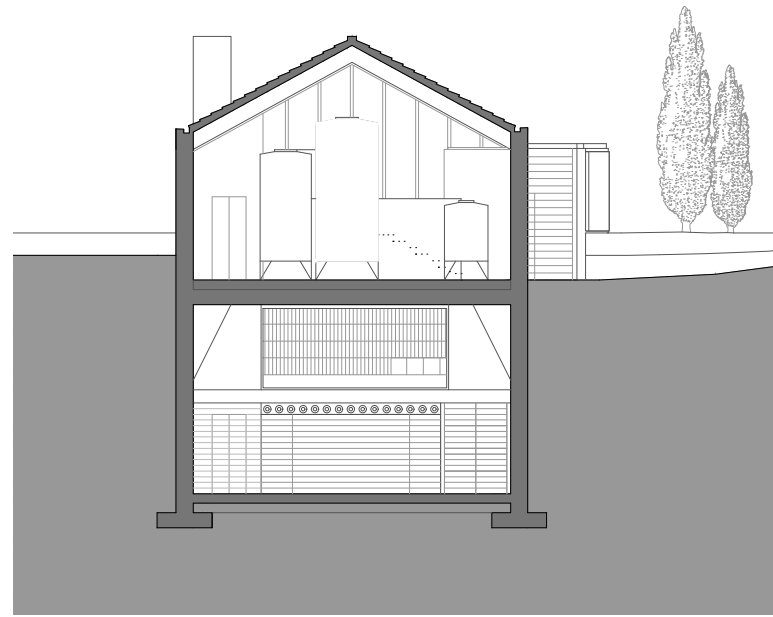
ENTREPLANTA SALA DE CATAS



PLANTA SALA DE BARRICAS



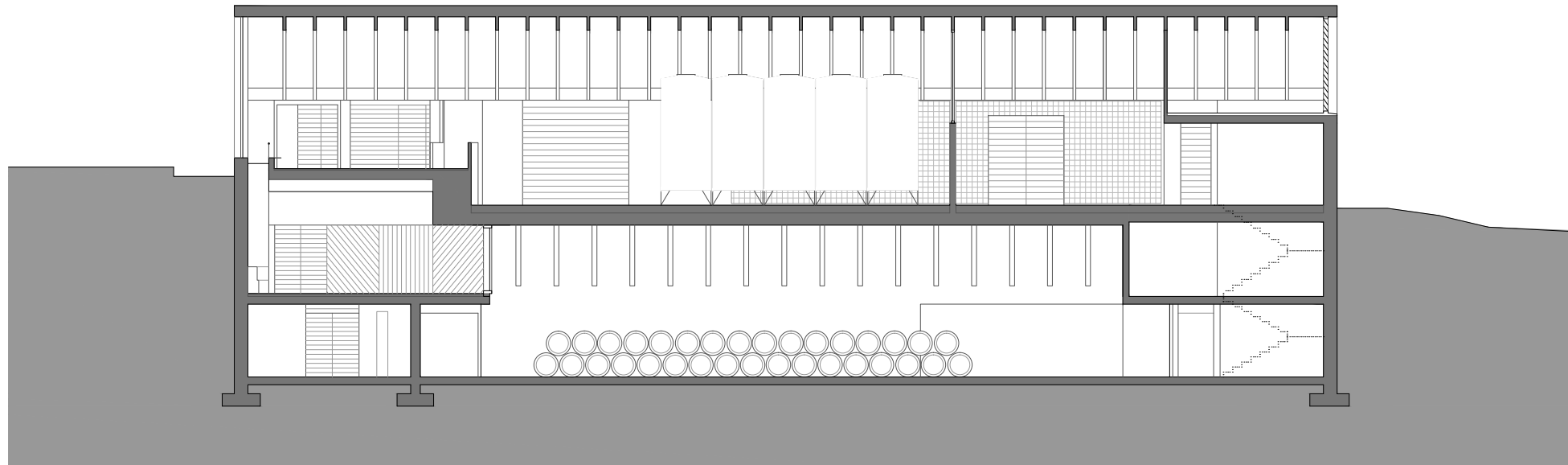
SECCIÓN A



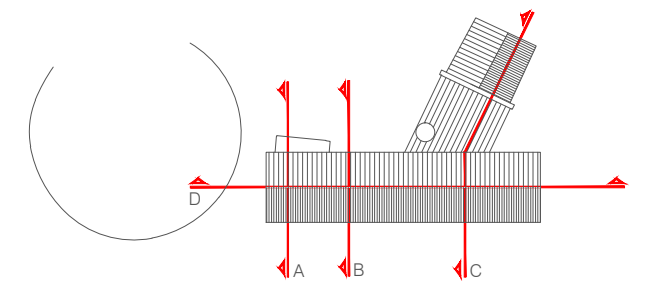
SECCIÓN B

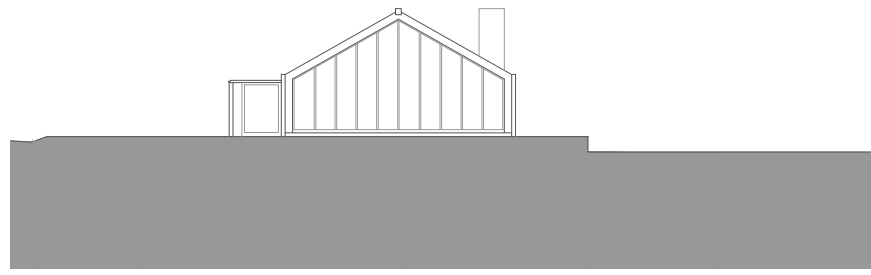


SECCIÓN C



SECCIÓN D





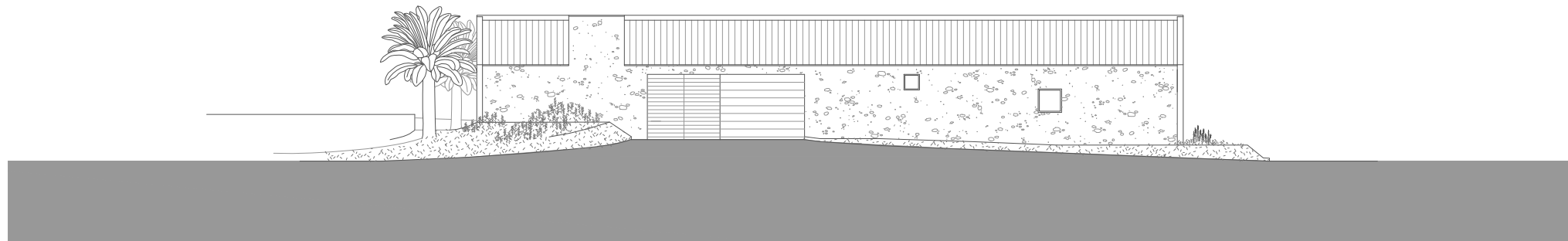
Alzado A Frontal a la Era



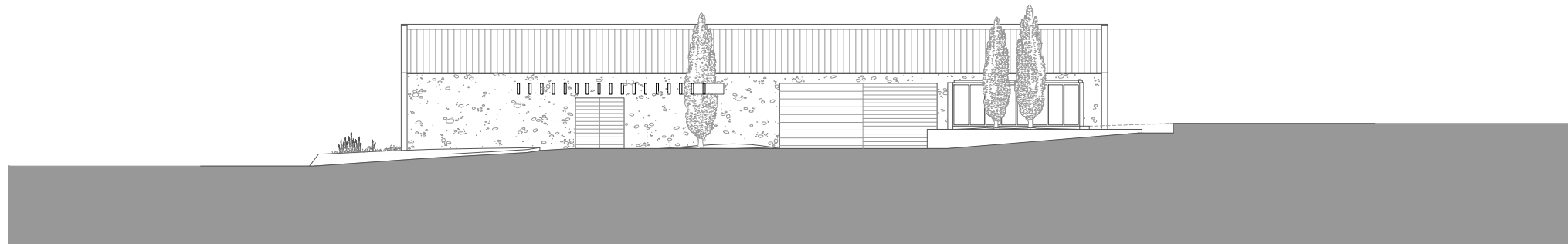
Alzado B Posterior



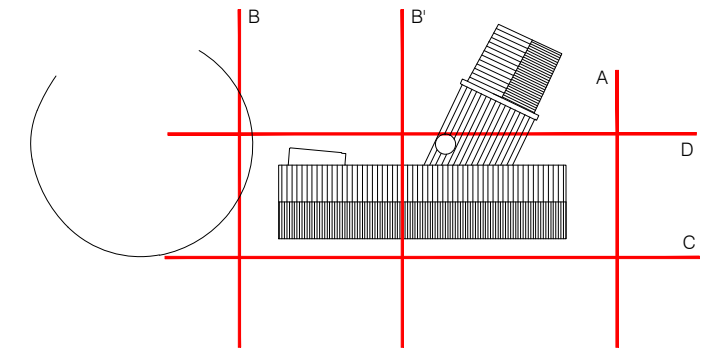
Sección B-B' Frontal hacia la pérgola

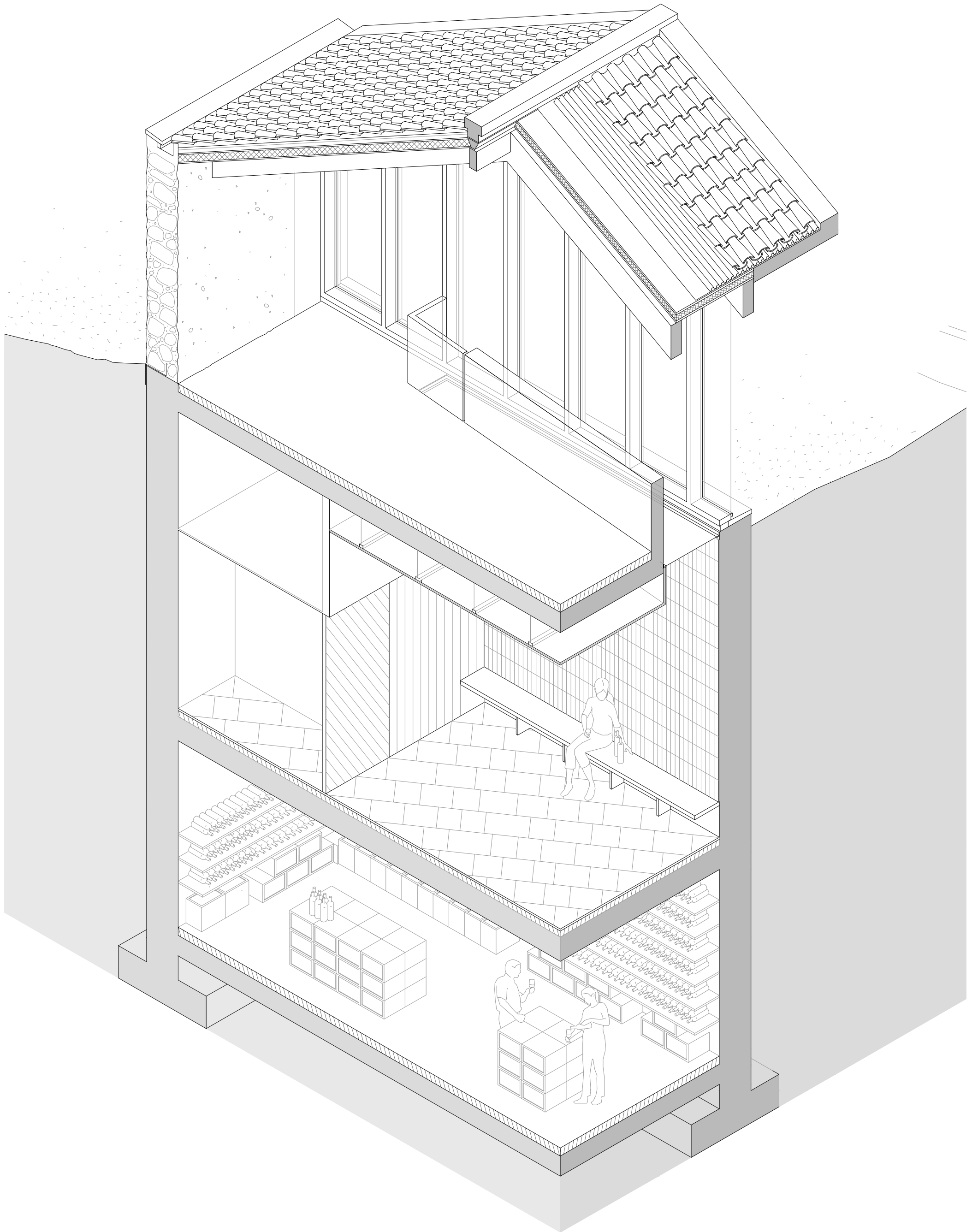


Alzado C Longitudinal desde cierre de parcela

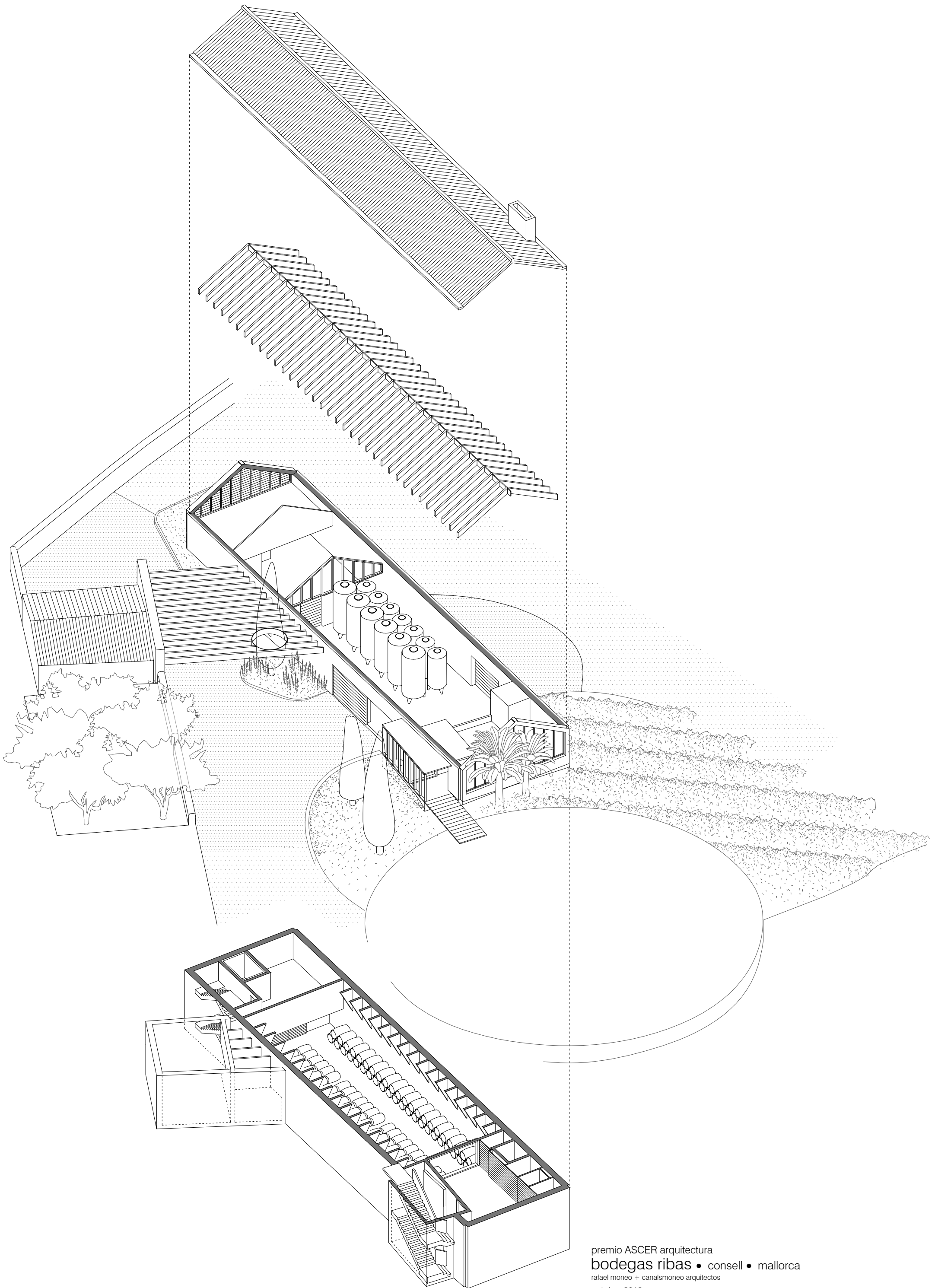


Alzado D Longitudinal hacia acceso principal de bodega





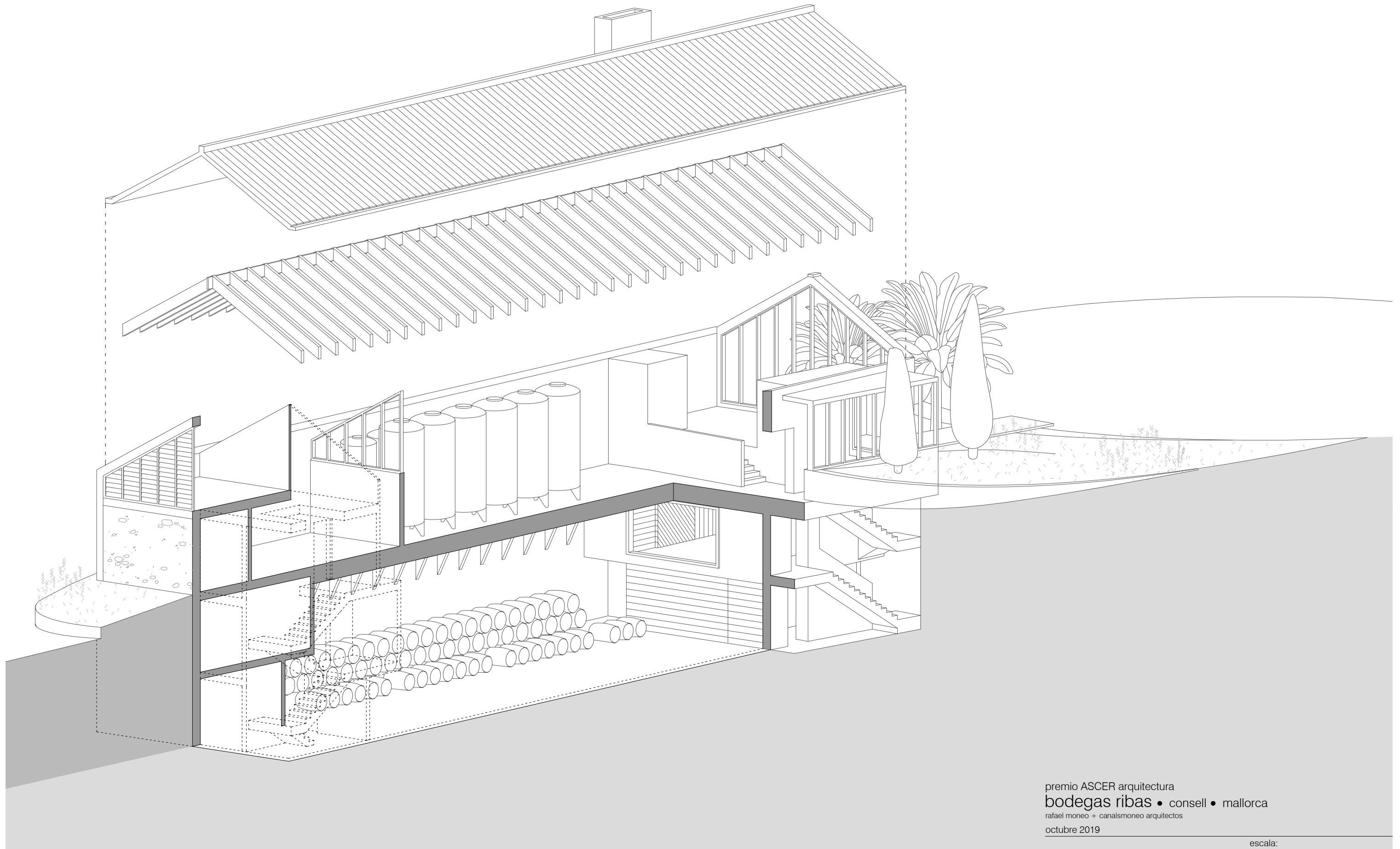




premio ASCER arquitectura  
**bodegas ribas • consell • mallorca**  
rafael moneo + canalsmoneo arquitectos  
octubre 2019

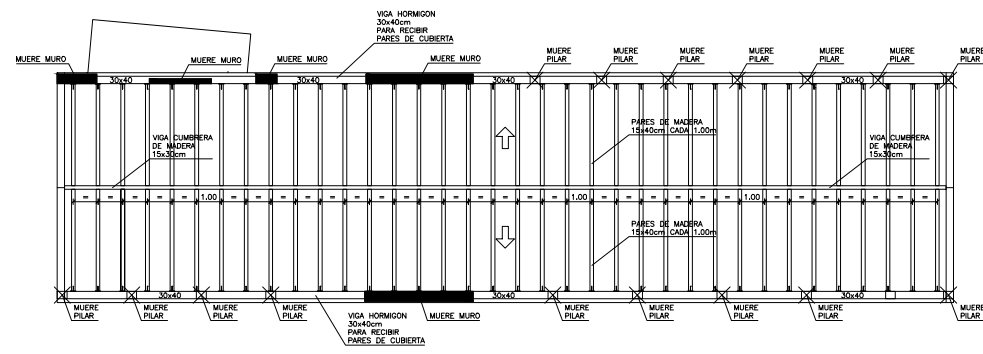
escala:



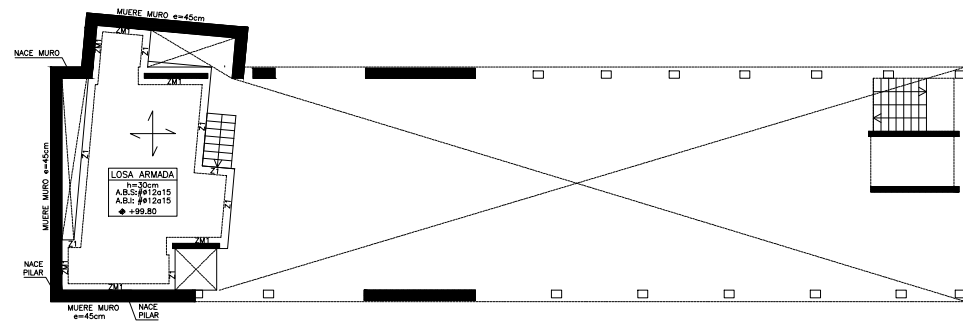


premio ASCER arquitectura  
**bodegas ribas** • consell • mallorca  
rafael moneo + canalsmoneo arquitectos  
octubre 2019

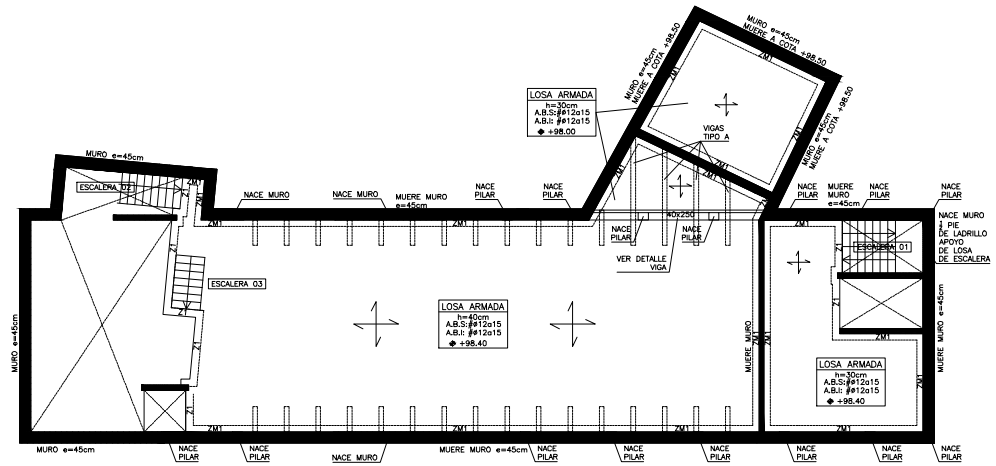
escala:



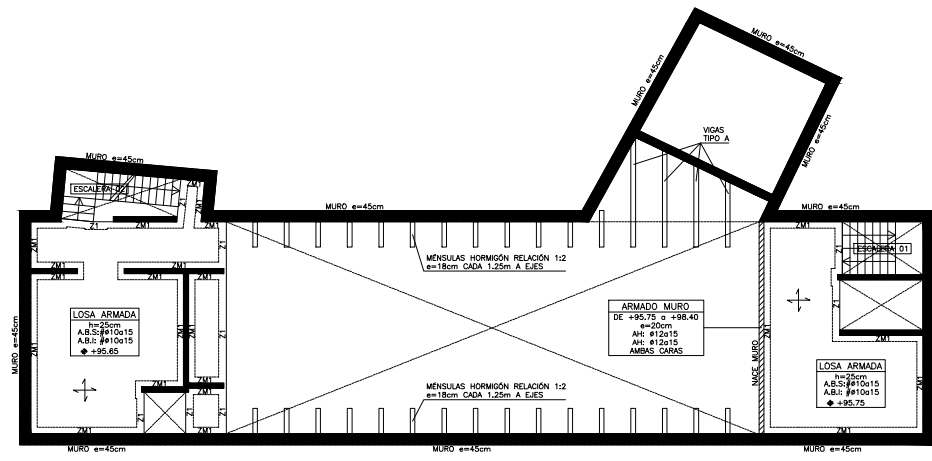
PLANTA CUBIERTA, DEFINICIÓN ESTRUCTURAL PARES DE MADERA CADA 1.00m  
ESCALA: 1/100



PLANTA ACCESO, +99.80, DEFINICIÓN ESTRUCTURAL  
ESCALA: 1/100



PLANTA ACCESO, +98.40, DEFINICIÓN ESTRUCTURAL  
ESCALA: 1/100



ENTREPLANTA, +95.65 Y +95.75, DEFINICIÓN ESTRUCTURAL  
ESCALA: 1/100