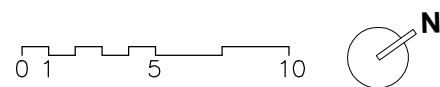


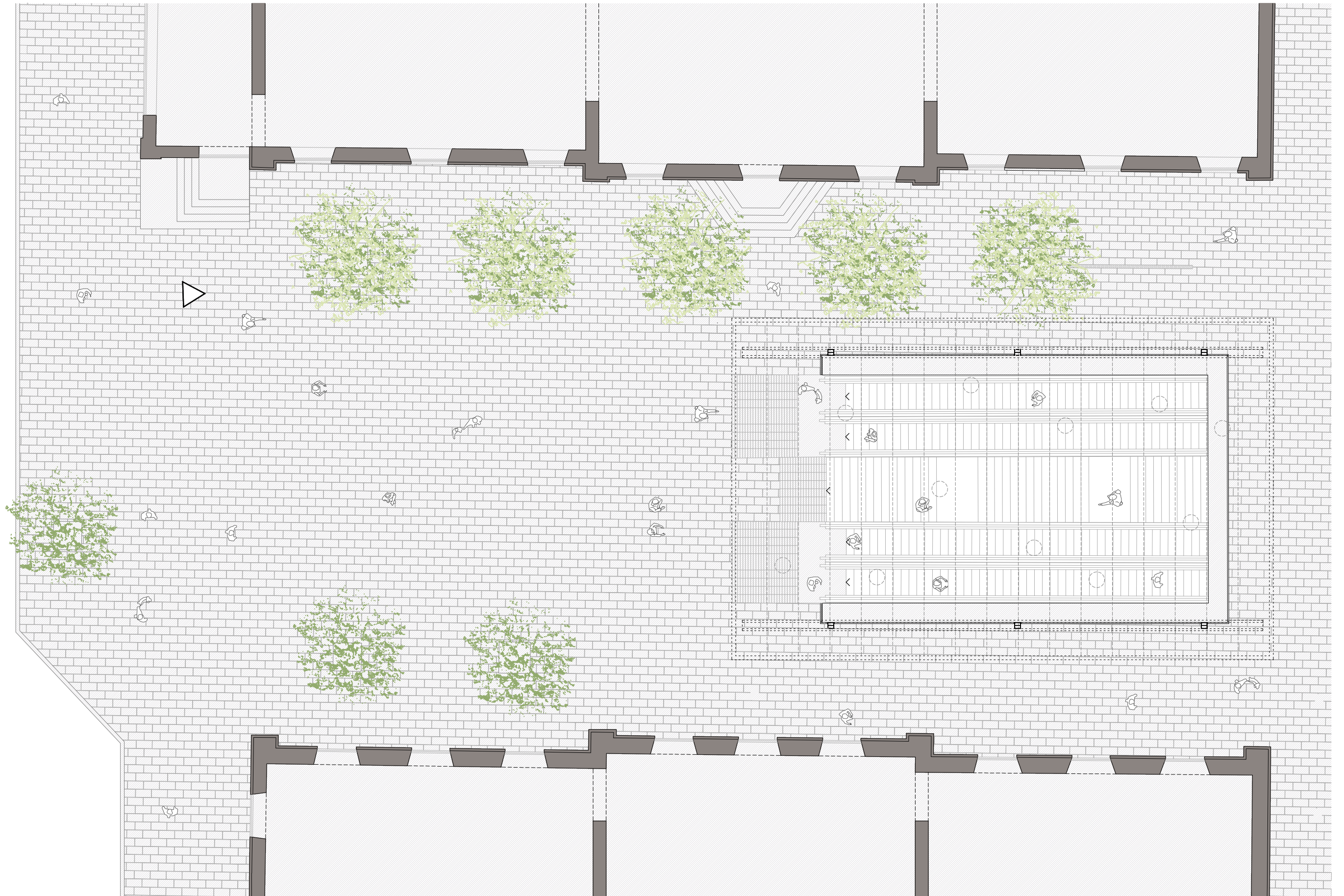
AREA DE INTERVENCIÓN



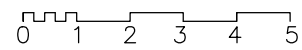
PLANO SITUACIÓN Y EMPLAZAMIENTO



CUBIERTA ENTRADA ESTACIÓN INTERMODAL EN PLAZA DE ESPAÑA S/N, ILLES BALEARS

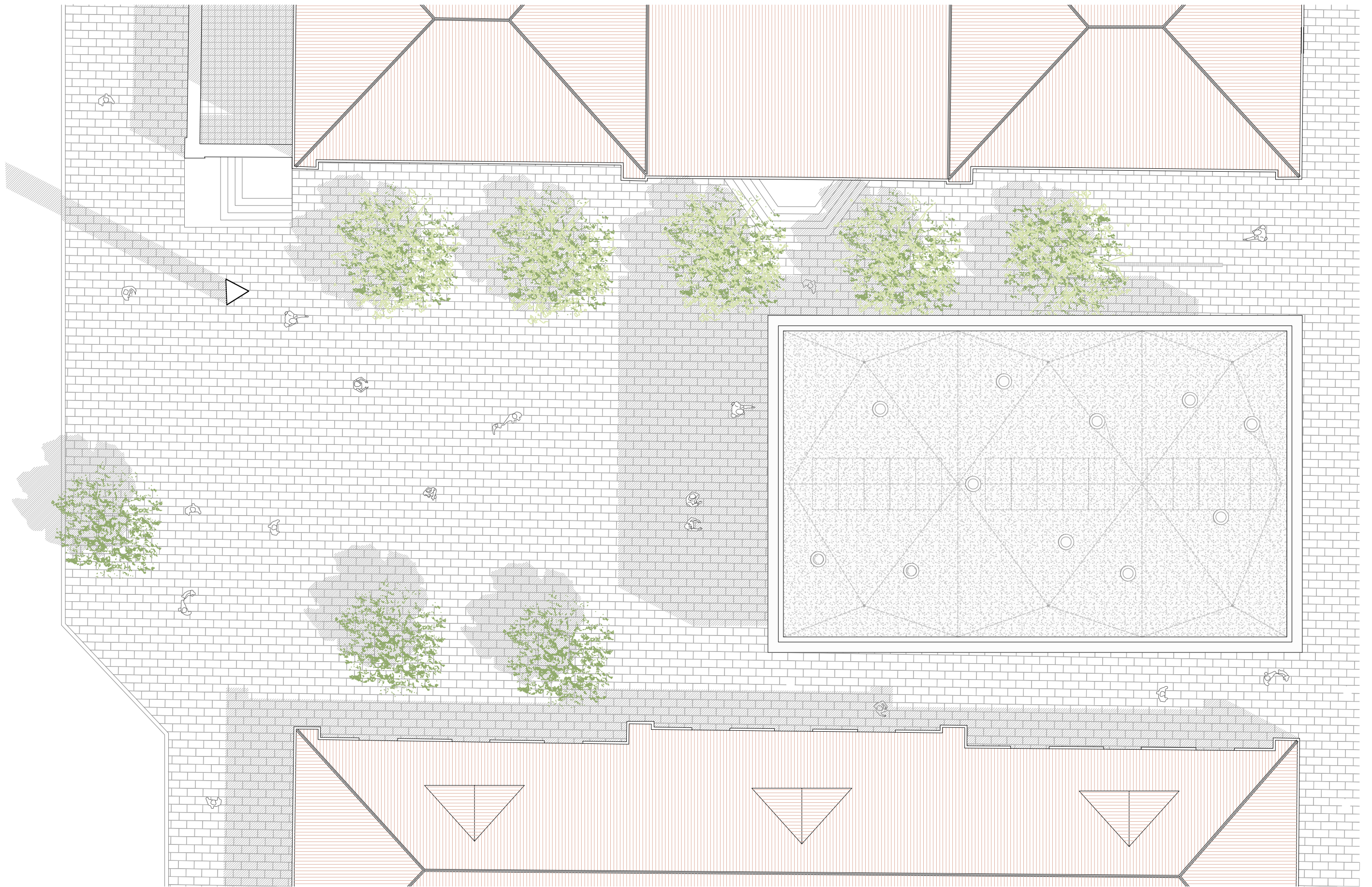


PLANTA BAJA

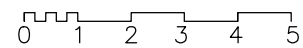


JOAN MIQUEL SEGUI
ARQUITECTURA
c/Margalida Caimari, 28 Bajo 07005 Palma | (+34) 971 099 370 | info@jmsegui.com | www.jmsegui.com

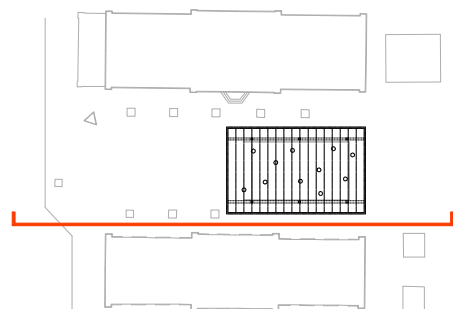
CUBIERTA ENTRADA ESTACIÓN INTERMODAL EN PLAZA DE ESPAÑA S/N, ILLES BALEARS



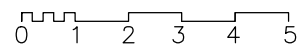
PLANTA CUBIERTA



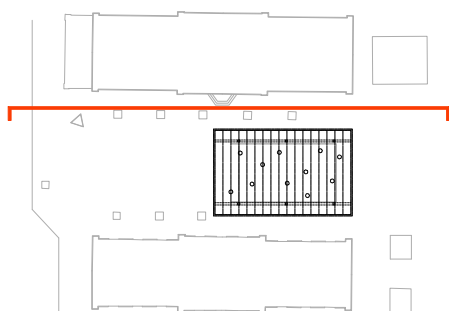
CUBIERTA ENTRADA ESTACIÓN INTERMODAL EN PLAZA DE ESPAÑA S/N, ILLES BALEARS



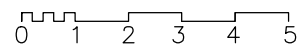
ALZADO LATERAL A-A'



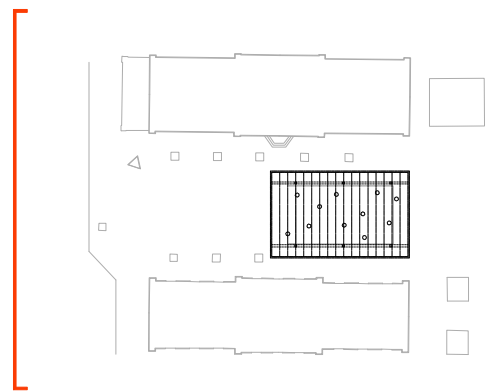
CUBIERTA ENTRADA ESTACIÓN INTERMODAL EN PLAZA DE ESPAÑA S/N, ILLES BALEARS



ALZADO LATERAL B-B'

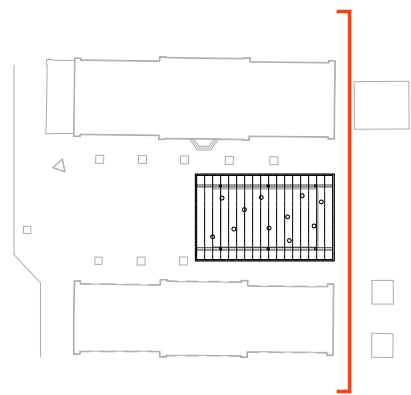
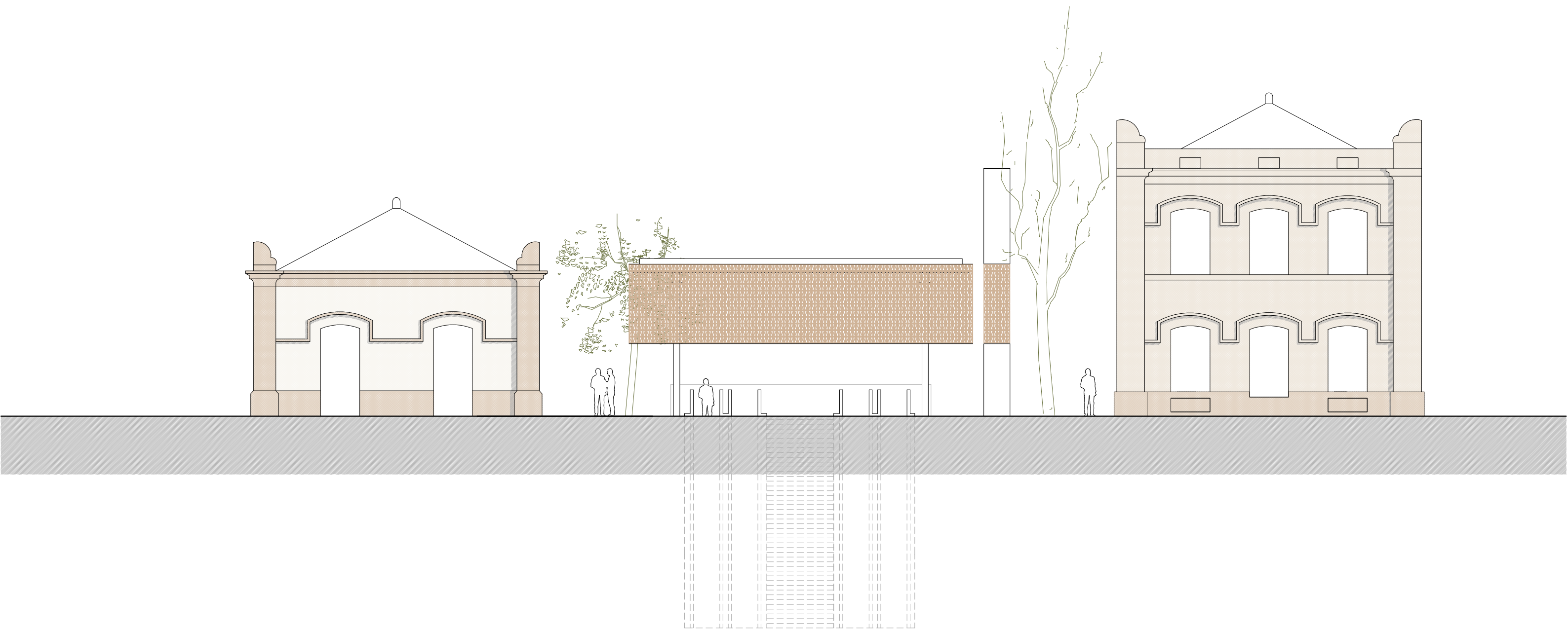


CUBIERTA ENTRADA ESTACIÓN INTERMODAL EN PLAZA DE ESPAÑA S/N, ILLES BALEARS

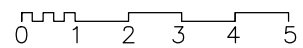


ALZADO PRINCIPAL 0 1 2 3 4 5

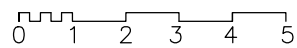
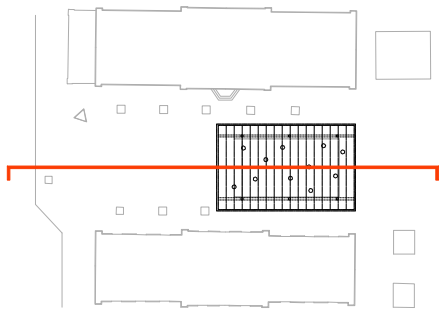
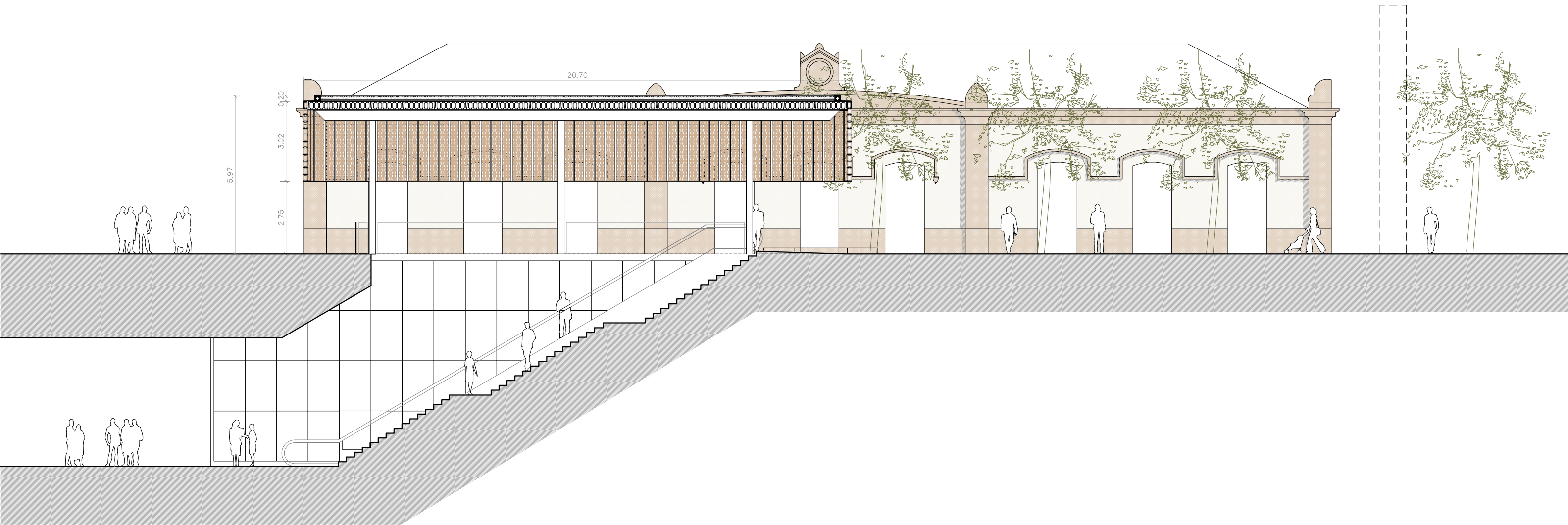
CUBIERTA ENTRADA ESTACIÓN INTERMODAL EN PLAZA DE ESPAÑA S/N, ILLES BALEARS



ALZADO POSTERIOR

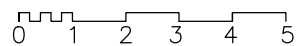
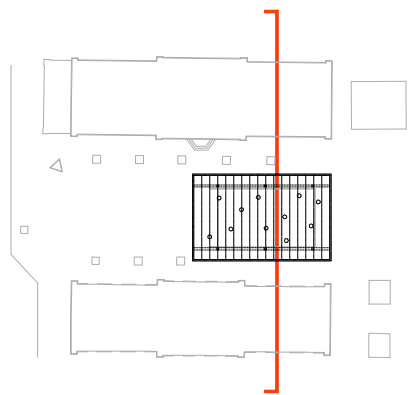
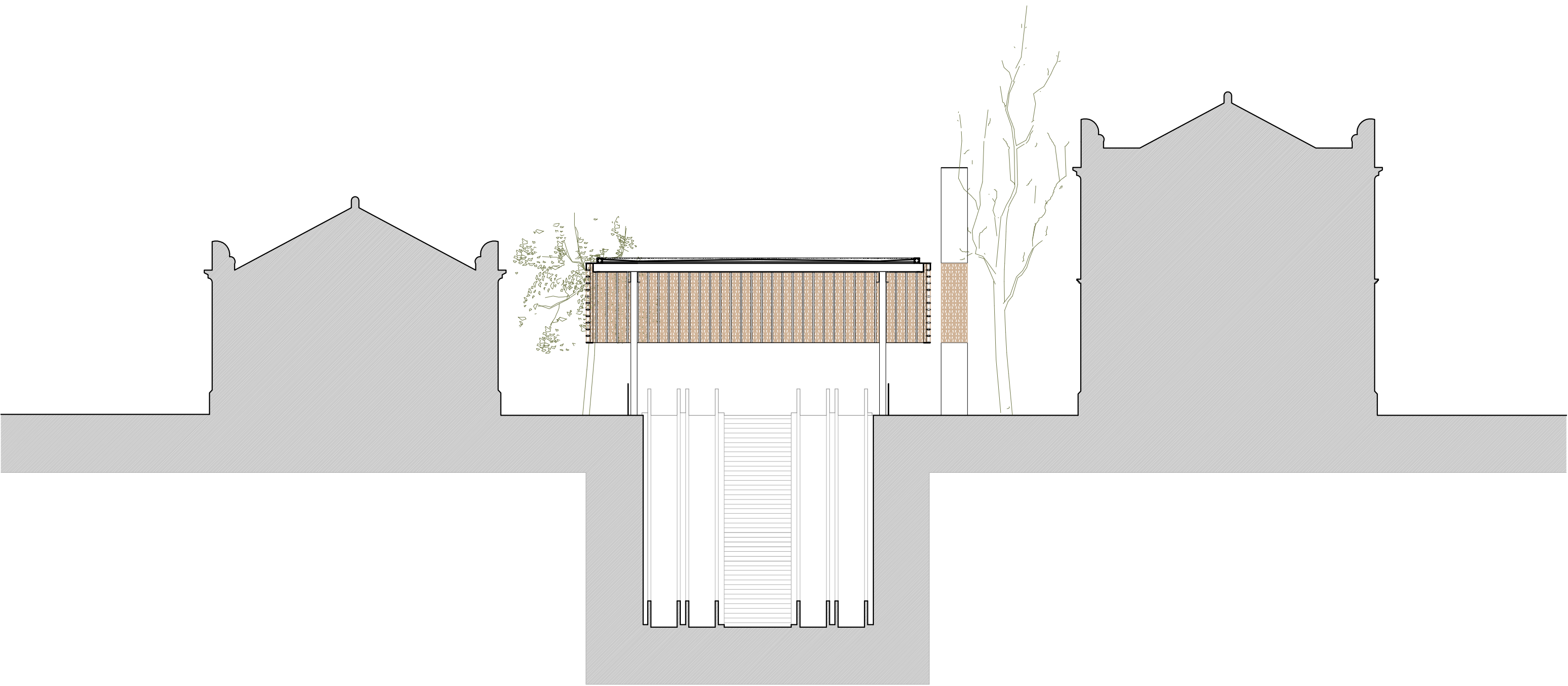


CUBIERTA ENTRADA ESTACIÓN INTERMODAL EN PLAZA DE ESPAÑA S/N, ILLES BALEARS



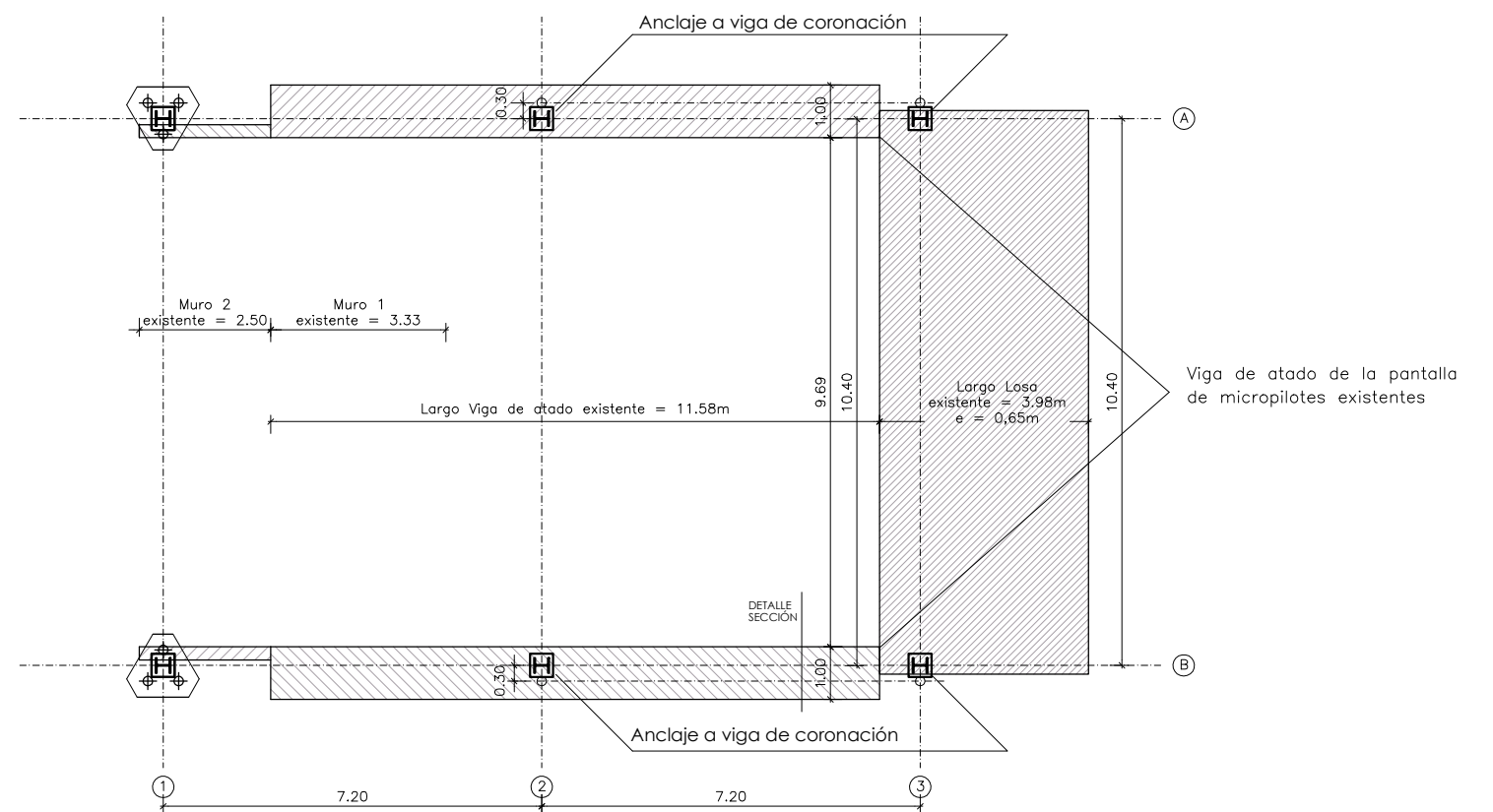
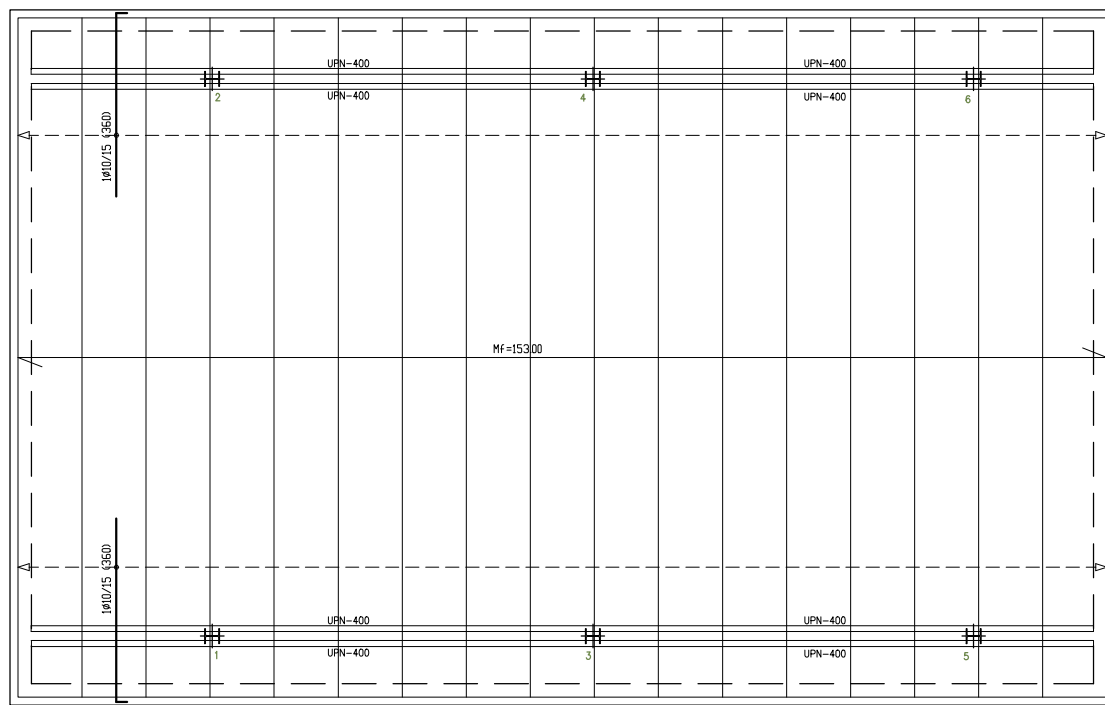
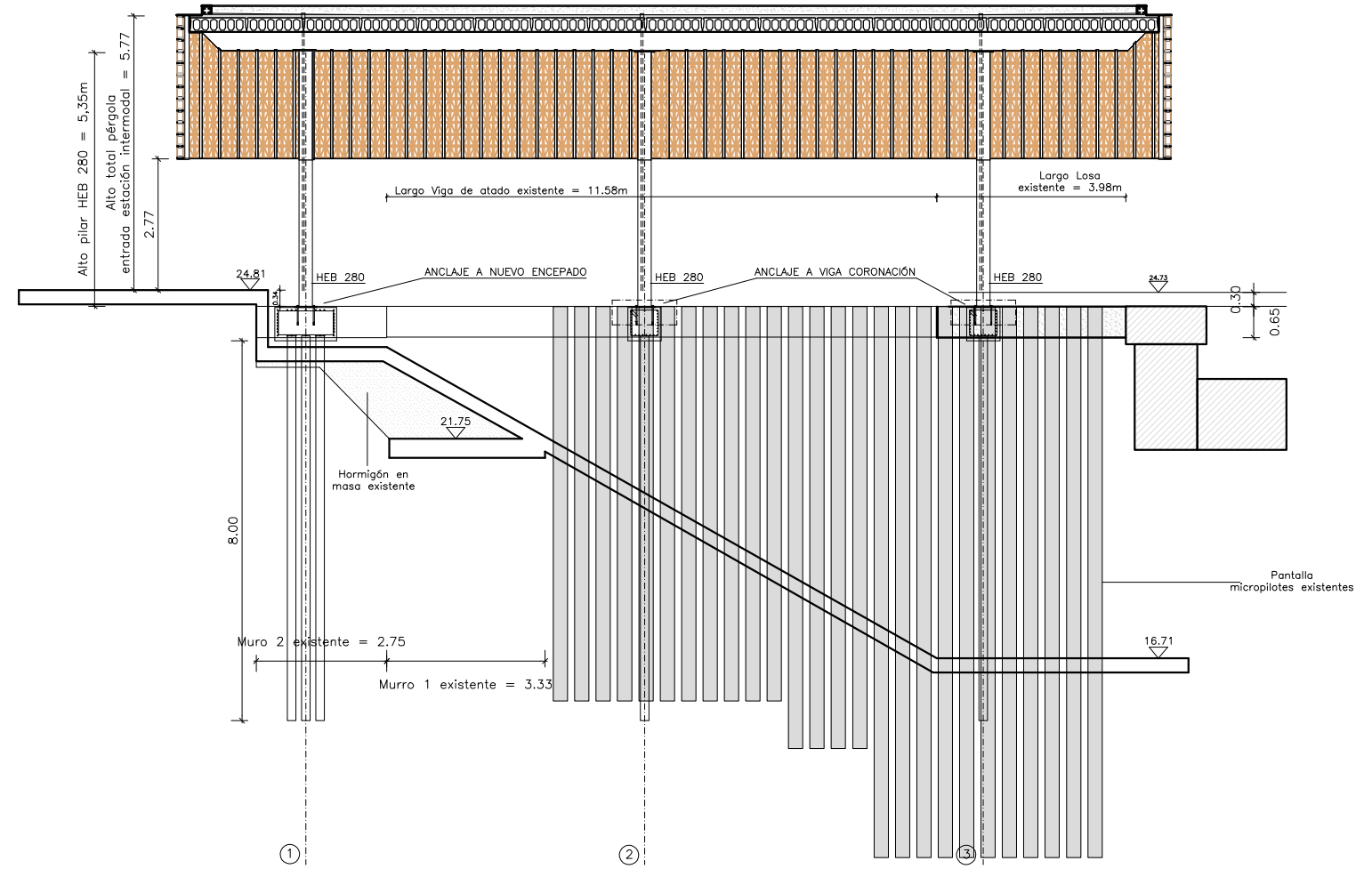
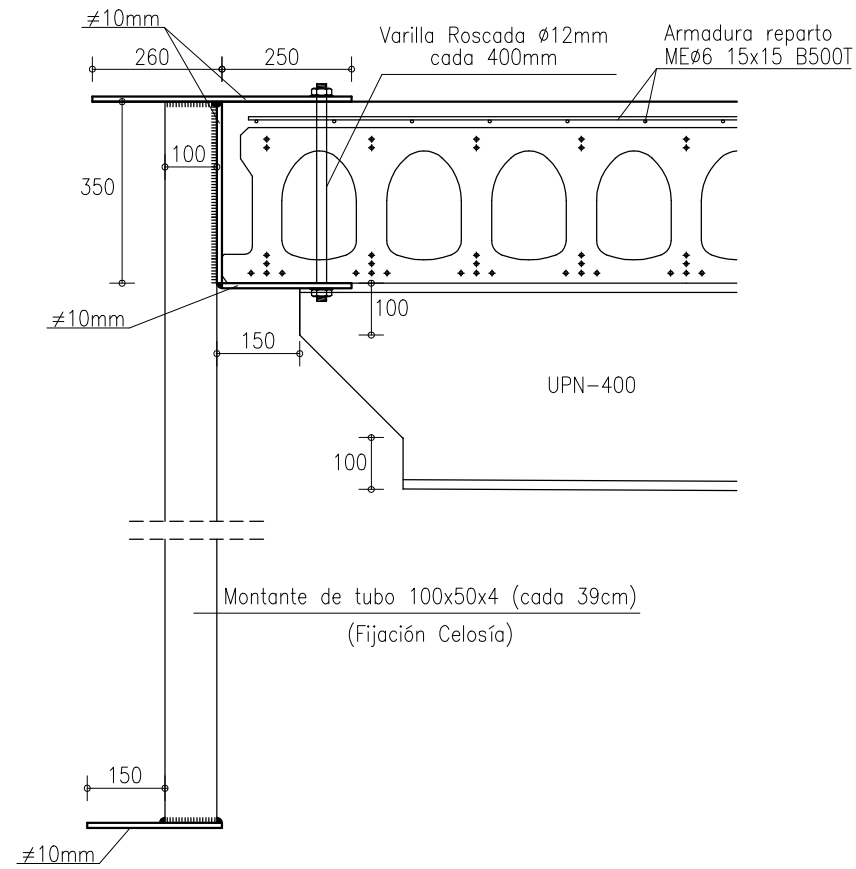
SECCIÓN LONGITUDINAL

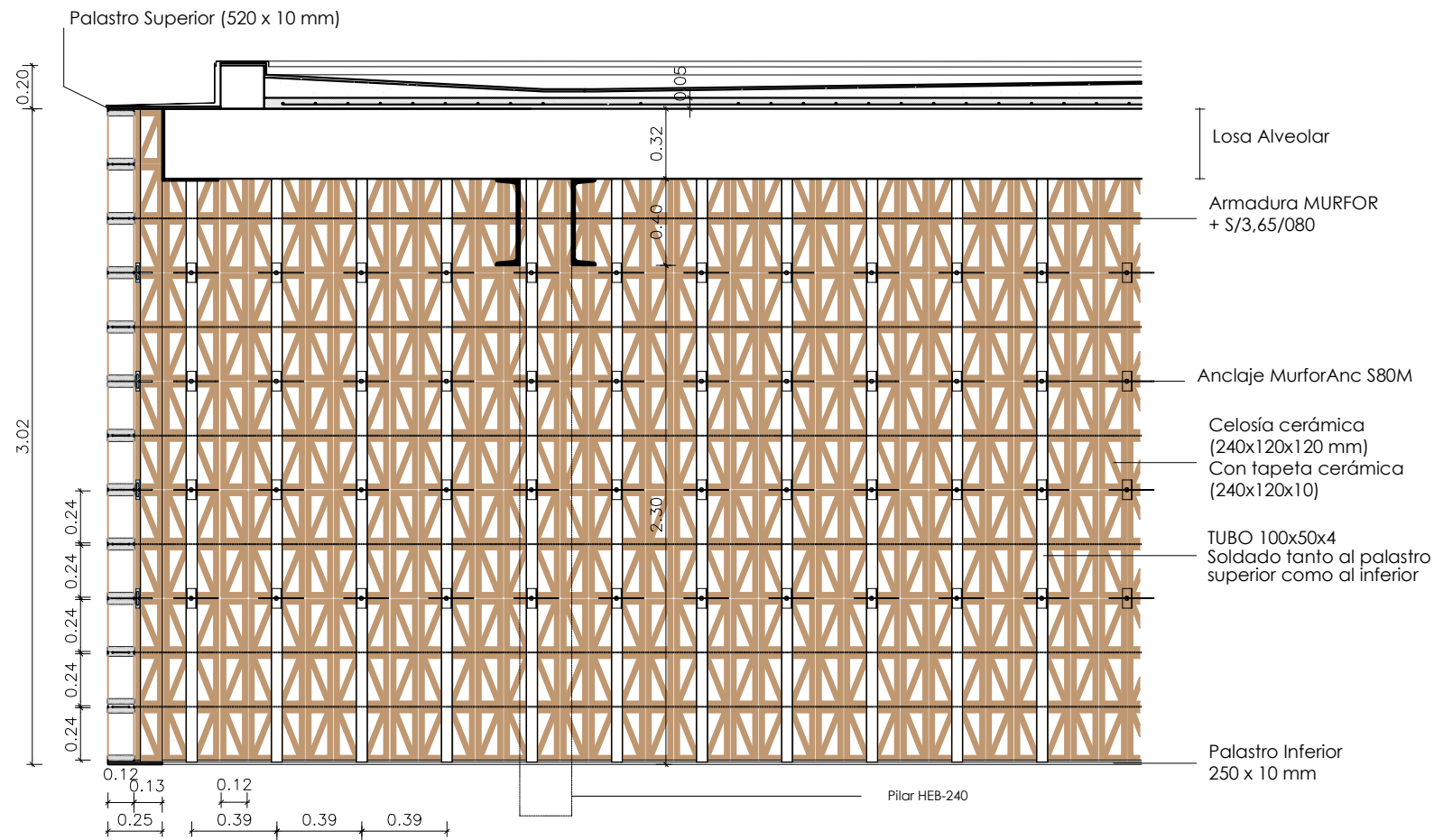
CUBIERTA ENTRADA ESTACIÓN INTERMODAL EN PLAZA DE ESPAÑA S/N, ILLES BALEARS



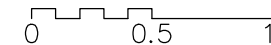
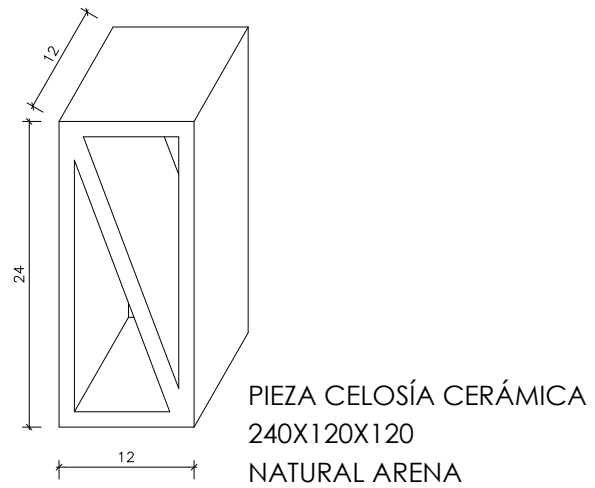
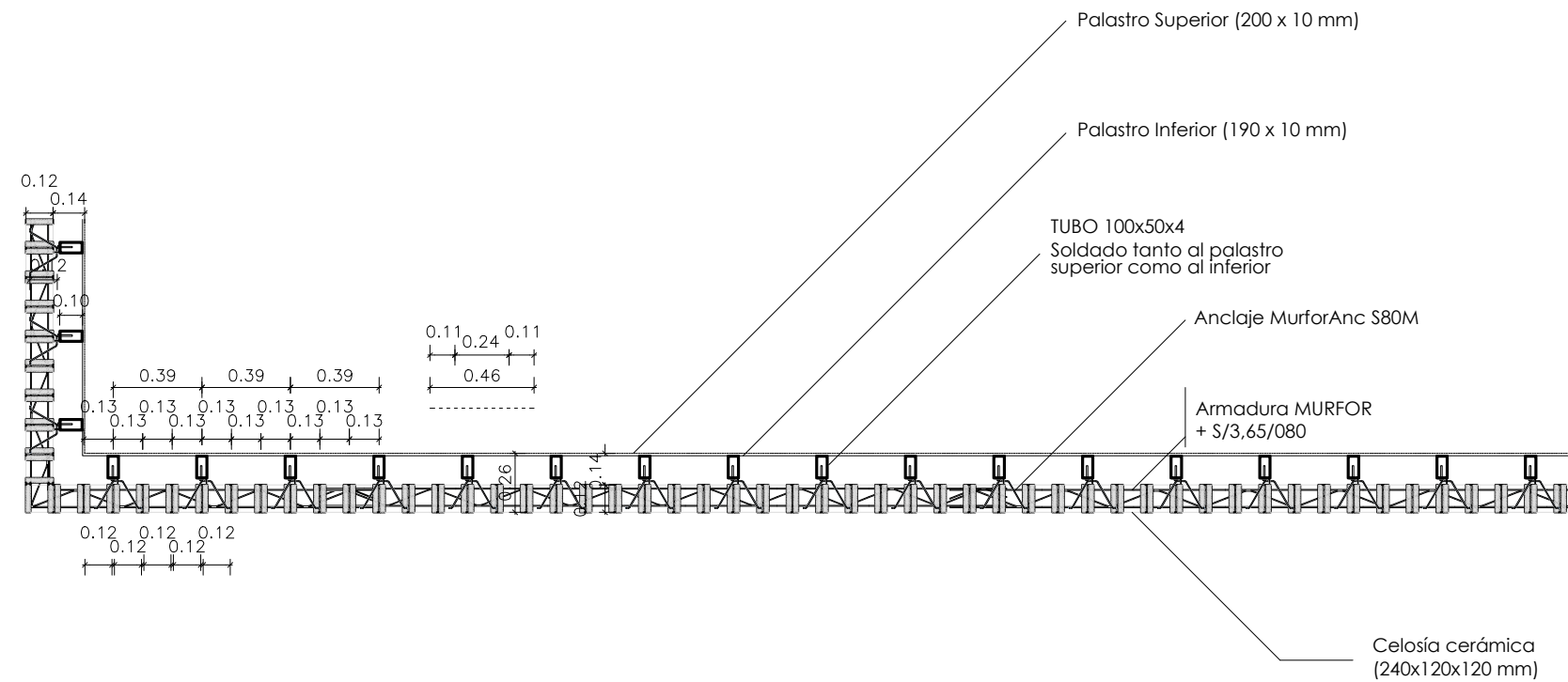
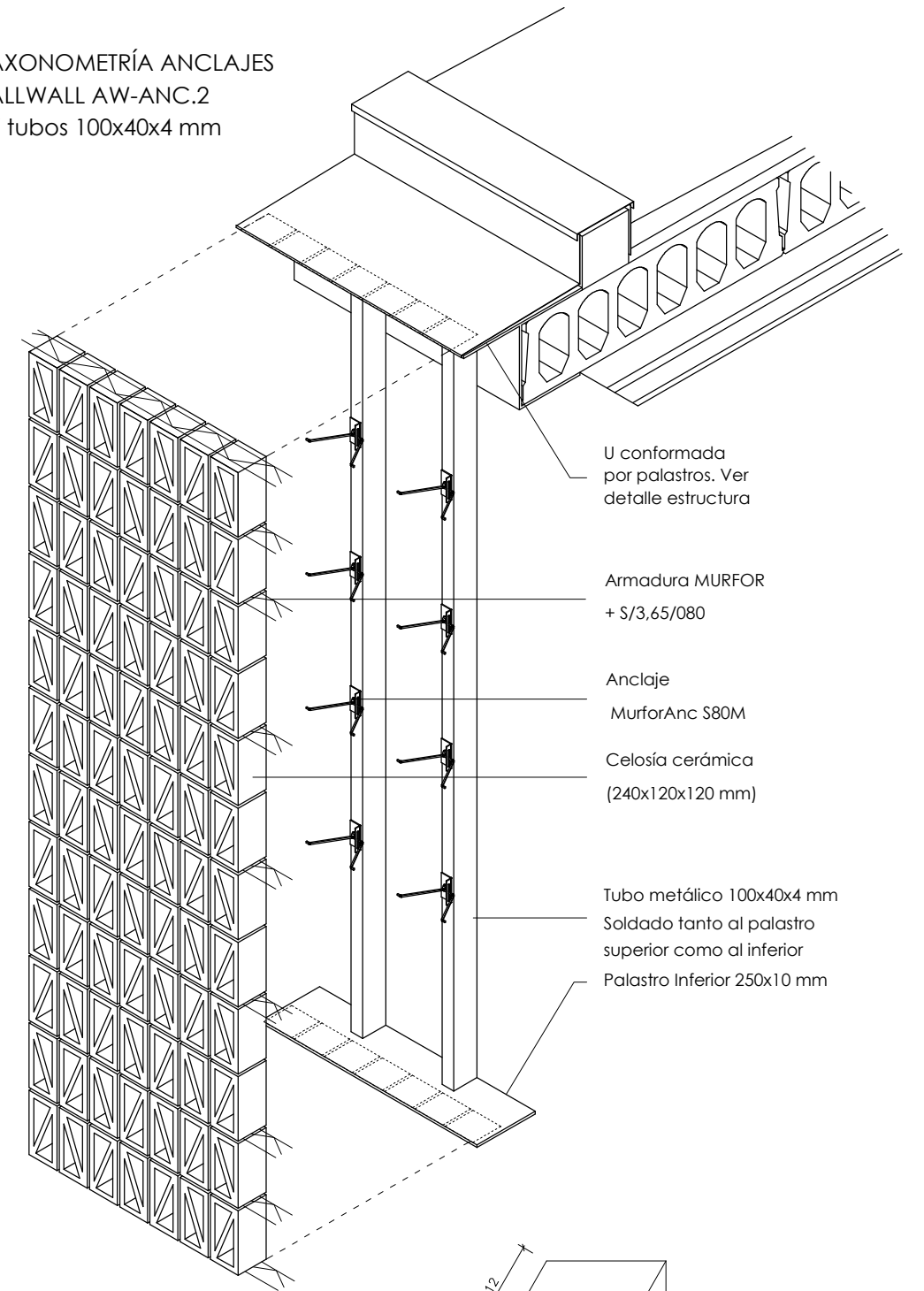
SECCIÓN TRANSVERSAL

CUBIERTA ENTRADA ESTACIÓN INTERMODAL EN PLAZA DE ESPAÑA S/N, ILLES BALEARS



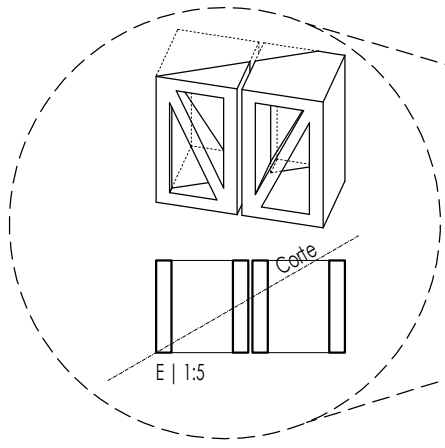
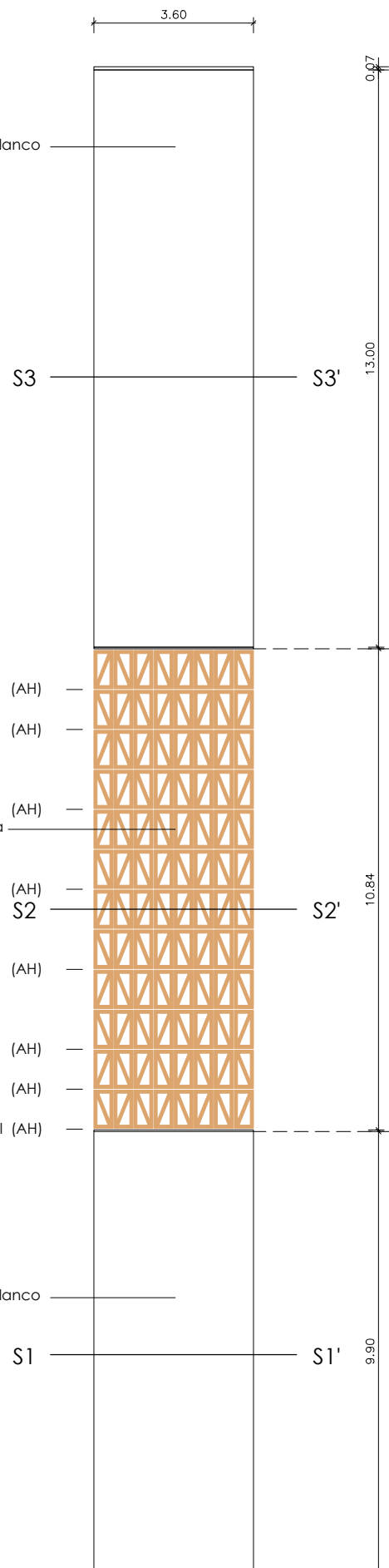
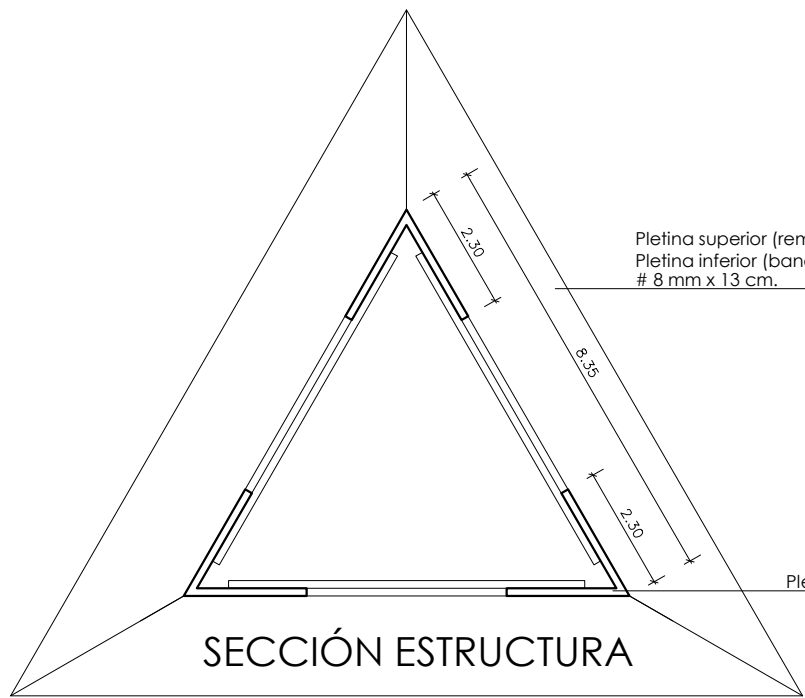
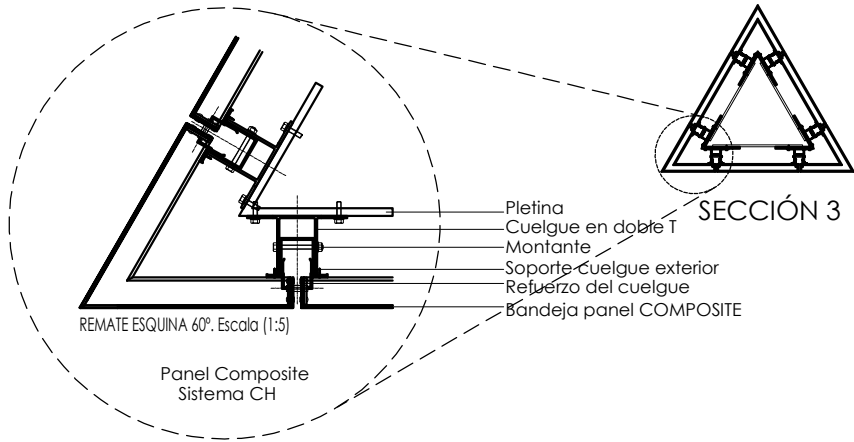
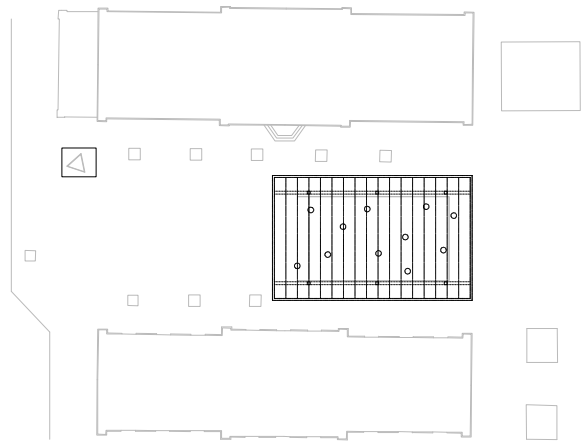


AXONOMETRÍA ANCLAJES
ALLWALL AW-ANC.2
Y tubos 100x40x4 mm



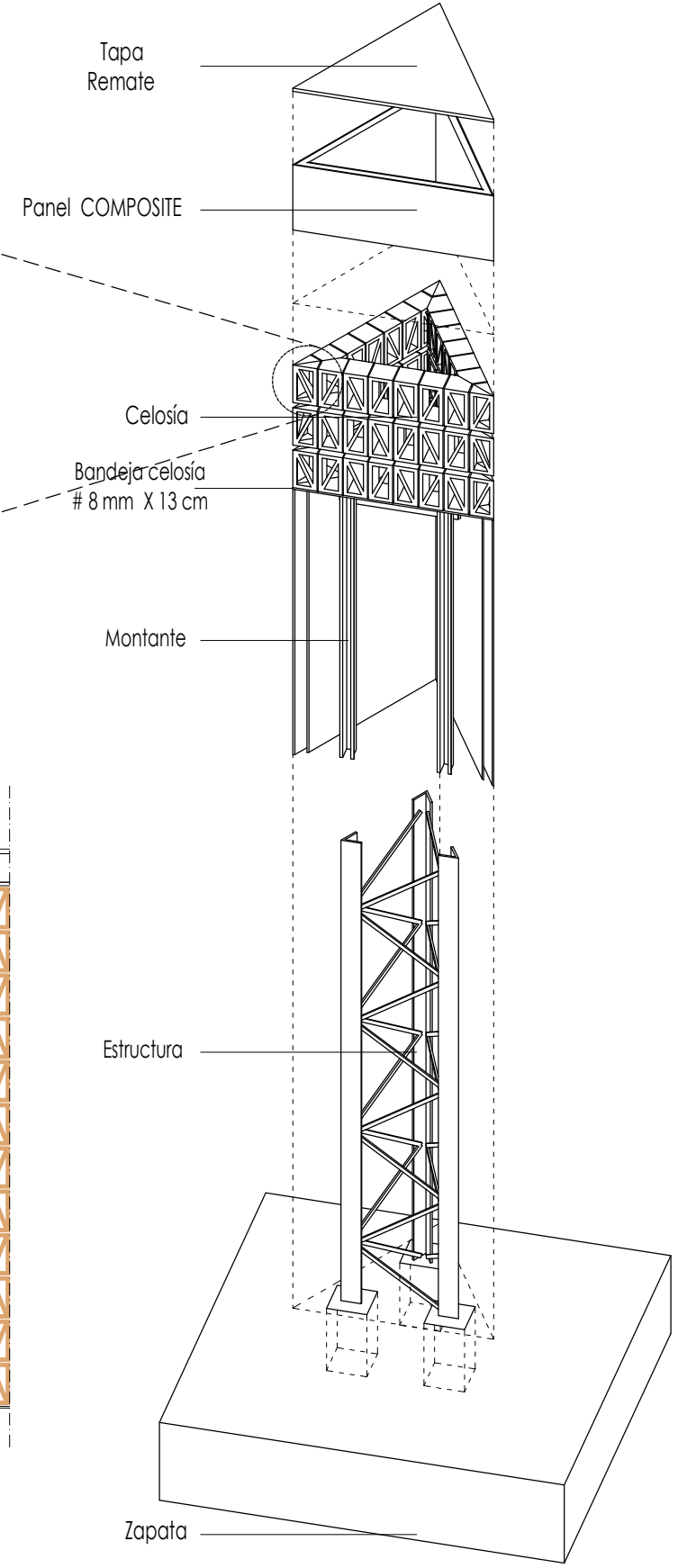
DETALLES CONSTRUCTIVOS

CUBIERTA ENTRADA ESTACIÓN INTERMODAL EN PLAZA DE ESPAÑA S/N, ILLES BALEARS



Cota Remate celosía + 5,77 m

Cota Bandeja celosía + 2,79 m



DETALLES CONSTRUCTIVOS

CUBIERTA ENTRADA ESTACIÓN INTERMODAL EN PLAZA DE ESPAÑA S/N, ILLES BALEARS